

# parlamentarium

The European Parliament's Visitors' Centre

# parlamentarium



## VISITOR'S GUIDE

The centre is fully accessible for visitors with special needs. Younger visitors can enjoy the Luna game (6–10 years) and Intergalactic Talent Show (10–14 years) while discovering what Europe is all about.

The Role Play Game is for students aged 14 and over. They can step into an MEP's shoes and experience life as a politician. School groups wanting to play this game should book in advance at [rpg@ep.europa.eu](mailto:rpg@ep.europa.eu)

### OPENING HOURS

Monday ..... 13:00–18:00  
Tuesday → Friday ..... 09:00–18:00  
Saturday → Sunday ..... 10:00–18:00

Last entrance is 30 minutes before closing time

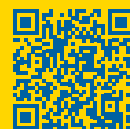
The Parlamentarium is closed on: 1 January, 1 May, 1 November and 24, 25, 31 December.

### ADMISSION IS FREE

### SHOP & CAFETERIA



Willy Brandt building  
Esplanade Solidarność  
Rue Wiertz 60 / Wiertzstraat 60  
B-1047 Brussels  
+32.2.283.22.22  
[parlamentarium@ep.europa.eu](mailto:parlamentarium@ep.europa.eu)



For up-to-date information on temporary exhibitions please visit [europarl.europa.eu/parlamentarium](http://europarl.europa.eu/parlamentarium)



Admission is free

[europarl.europa.eu/parlamentarium](http://europarl.europa.eu/parlamentarium)

Visit the **PARLAMENTARIUM** and discover what makes the European Parliament so unique.

Visitors of all ages can see how decisions are made and how they influence our daily lives. An interactive virtual trip through Europe, a 3D light map of the continent and a dialogue with European citizens all help you to become part of the Parliament.

The exhibition is in 24 languages and has six permanent areas and one temporary exhibition space as well as a cafeteria and a shop.



Discover how the European Parliament works in a stunning 360° movie

ISBN 978-92-823-6688-8

This publication was produced by the European Parliament's Directorate-General for Communication.

# parlamentarium



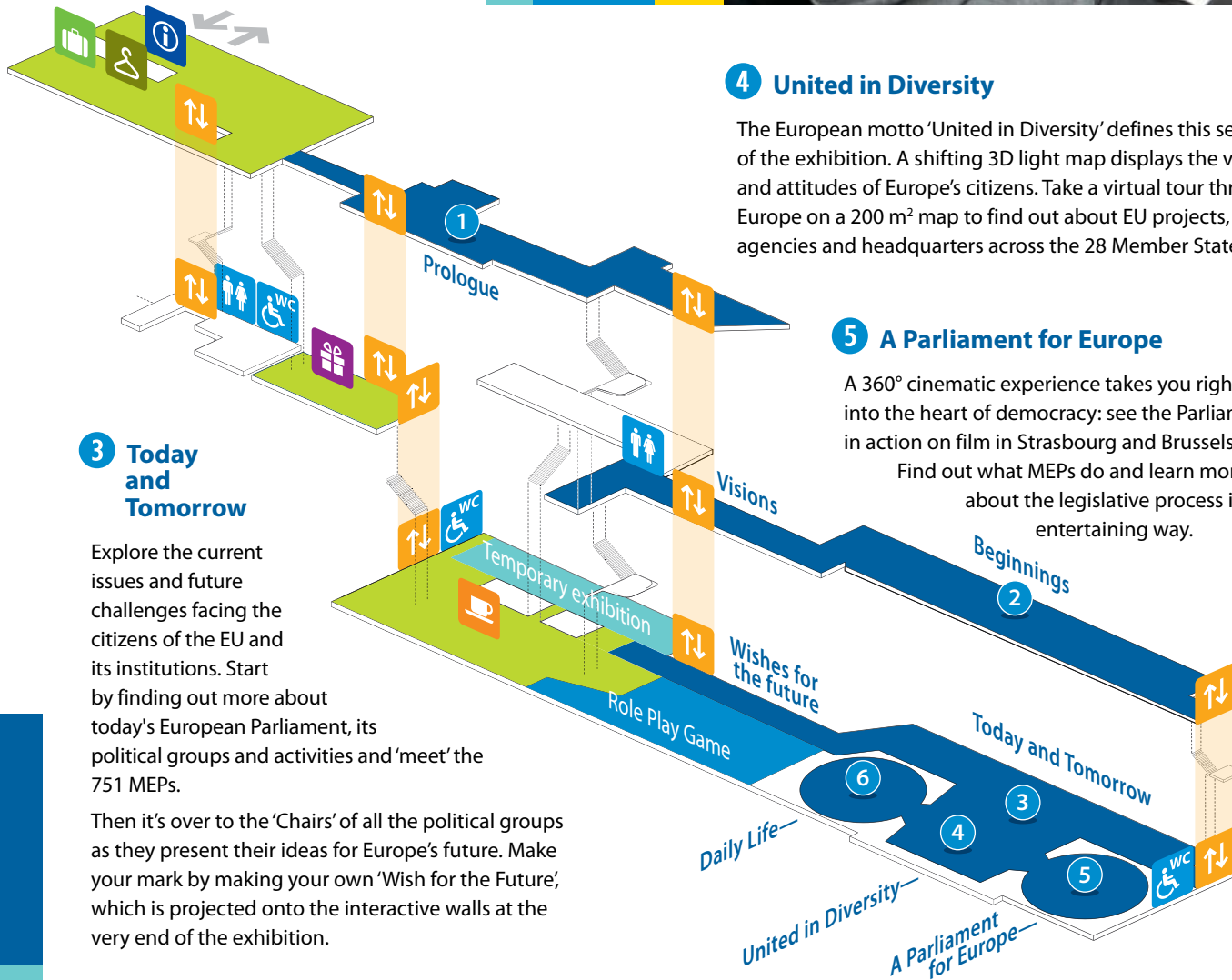
## 1 Prologue

The exhibition kicks off by looking at the unique features of the European Parliament and the common challenges facing Europe.

You can also take a walk through the 'Tunnel of Voices' and experience the multilingual melting pot that is the European Union (EU) and its 24 official languages.

## 2 Beginnings

Learn about Europe's long and often troubled history. Find out about the EU's early visionaries such as Robert Schuman and track 50 years of European integration. Maps explain how the EU has grown while interactive tables provide a snapshot of the EU treaties.



## 3 Today and Tomorrow

Explore the current issues and future challenges facing the citizens of the EU and its institutions. Start by finding out more about today's European Parliament, its political groups and activities and 'meet' the 751 MEPs.

Then it's over to the 'Chairs' of all the political groups as they present their ideas for Europe's future. Make your mark by making your own 'Wish for the Future', which is projected onto the interactive walls at the very end of the exhibition.

## 4 United in Diversity

The European motto 'United in Diversity' defines this section of the exhibition. A shifting 3D light map displays the values and attitudes of Europe's citizens. Take a virtual tour through Europe on a 200 m<sup>2</sup> map to find out about EU projects, agencies and headquarters across the 28 Member States.

## 5 A Parliament for Europe

A 360° cinematic experience takes you right into the heart of democracy: see the Parliament in action on film in Strasbourg and Brussels. Find out what MEPs do and learn more about the legislative process in an entertaining way.

## 6 Daily Life

Decisions taken by the European Parliament have an impact on the daily lives of over 500 million Europeans. Listen as 54 of them explain, on camera, how those decisions affect them on a daily basis.

